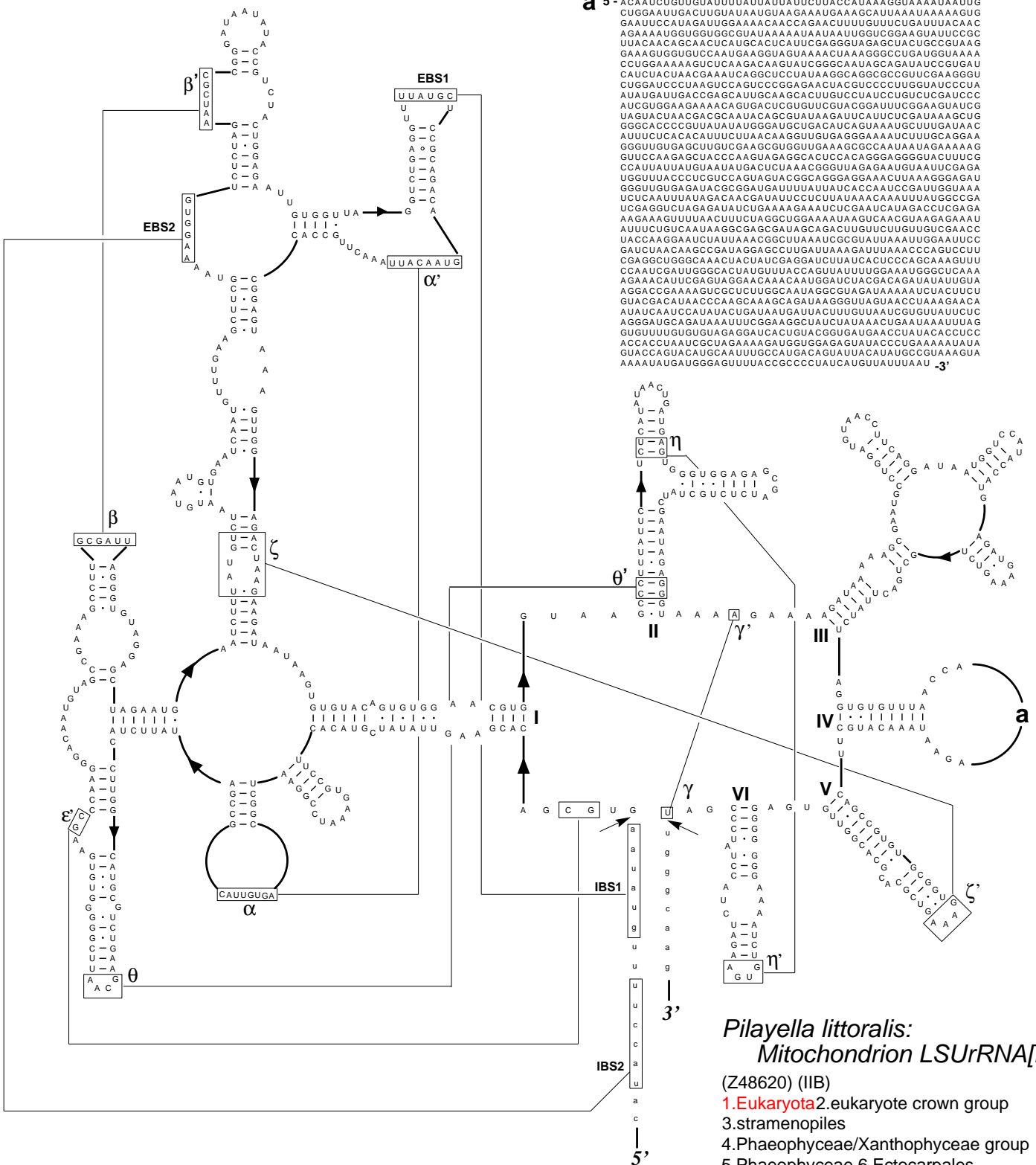


Secondary Structure: Group II intron

a 5'-ACAACUCUGUGUAUUUUUAUUUAUUUUCUACCAUAAAGGUA AAAUAUUUG
 CUGGAAUUAGCUUGUAUAUUGUAAGAAUGAAAGCAUUAAAUAARAGUG
 GAAUUCCAAUGAUUGGAAAACAACACCAAGAAACUUUUUUUUCUGAUUUACAAC
 AGAAAAGUGGUGGUGGCUAUA AAAUAUAAUUGGUCGGAAGUAUUCGCG
 UUAACAACGCAACUCUAGCACAUCUACGGGUAAGGCUACUGCGGUAAG
 GAAAUGUGGUCCAAUGAAGGUAUA AAAACUAAAAGGCCUGAUGGUA AAA
 CCUGGAAAAGGUCUAAGACAAGUAUCGGGCAUAAGCAUAUCCGUGAU
 CAUCUACUAACGAAAUCAGGCCUUAUAAAGGAGGCCGUGUAGAGGUA
 CUGAUAUCCUAAGUCCAGUCCGAAACUAACGUCUCCUUGGUAUCCCUA
 AUAUGAUUGACCGAGCAUUGCAAGCAUUGUCUUAUUCUGUCUGCAUCC
 AUCUGGGAAGAAAACAAGUACUCGUGUUCGUAACGGAUUUCGGAAGUUCG
 UAGUACUAACGACGCAUACAGGCUAUAAGAUAUUCUGGAUAAAGCUG
 GGGACCCCGUUAUAUUGGGAUGCUGACAUGAUAUUGCUUUAUAAC
 AUUUCUCACACAUUUCUUAACAAGUUGUGAAGGGAUUAUUCUUGCAGGAA
 GGGUUGUGAGCUUGUCGAGGCGUGGUA AAAAGCCAAUUAUAAGAAAAG
 GUUCCAAGAGCUACCAAGUAAGGCAUCCACAGGGAAGGUAUUCUUCG
 CCAUUAUUUGUAUAUAGACUAACCGUUAACAGGUAAGAGAAUGUAUUCGAG
 UGGUUAUCCUUGUCCAGUAUAACGGCAGGGAGGAAAUUAAGGGAU
 GGGUUGUGAGUAACGGGUAUAUUUUUAUCAACAACGGAUUGGUA AAA
 UCUAUUUAUAGACAACGAUAUUCUUAUAACAAUUAUUAUGGCCGA
 UCGAGGUCUAGAGUAUCUGAAAAGAAUUCUGCAUAUCAAGCCUGGAGA
 AAGAAAGUUUAACUUUCUAGGCGGUA AAAUAGUCAAGUAAGAGAAA
 AUUUCUGUAUAAGGCCAGCGUAAGCAAGCUUUGUUCUUGGUCGAAACC
 UACCAUAGGAUAUAACCGGUAAAUUCGUAUAUUAUUAGGAAUUC
 GAUCACAACCGGAUAGGAGCGCUUAUAUAAGUAUAUUAACCGAGUCCU
 CGAGGCGGGCAACUAUAUAGGAUUAUAGCUCGCCAGCAAAAUUU
 CCAUCGAUUGGCAUAUUAUAACGUAUUUUGGAAUUGGCUCAA
 AGAAACAUAUGGUAAGAAACAACAAGGUAUCAAGCAAGUAUUAUUGUA
 AGGACCGAAAAGUCCCUUGGCAUAAGGCGUAAGUA AAAAUAUCUAUCU
 GUACGACUAACCCAAAGCAAAGCAUAAGGUAUAUAACCUAAGAAACA
 AUUCAUCCAUAUACUGAUAUAGUAUAUUAUUAUUCGUAUUCUUC
 AGCAUACAGUAUAUUAUGGAGGUAUCUAUAACUGAAUAUUAUUA
 GUGUUUGUGUGUAGGAUACUGUACGUGUAUAGCAUAUACCUCC
 ACCCAUAUCGUAAGAAAGUUGGUAAGUAUACCGUA AAAUAUA
 GUACCAUAUCGUAUUAUUGGCAUGACAUAUAUCAUUGCCGUAAGUA
 AAAUAUGAUGGGGUAUUUACCGCCCUUAUCAUUGUUAUUUAU 3'



Pilayella littoralis:
 Mitochondrion LSUrRNA[i1,575]

(Z48620) (IIB)

- 1. Eukaryota
 - 2. eukaryote crown group
 - 3. stramenopiles
 - 4. Phaeophyceae/Xanthophyceae group
 - 5. Phaeophyceae
 - 6. Ectocarpales
 - 7. Ectocarpaceae
 - 8. Pilayella
- October, 2000