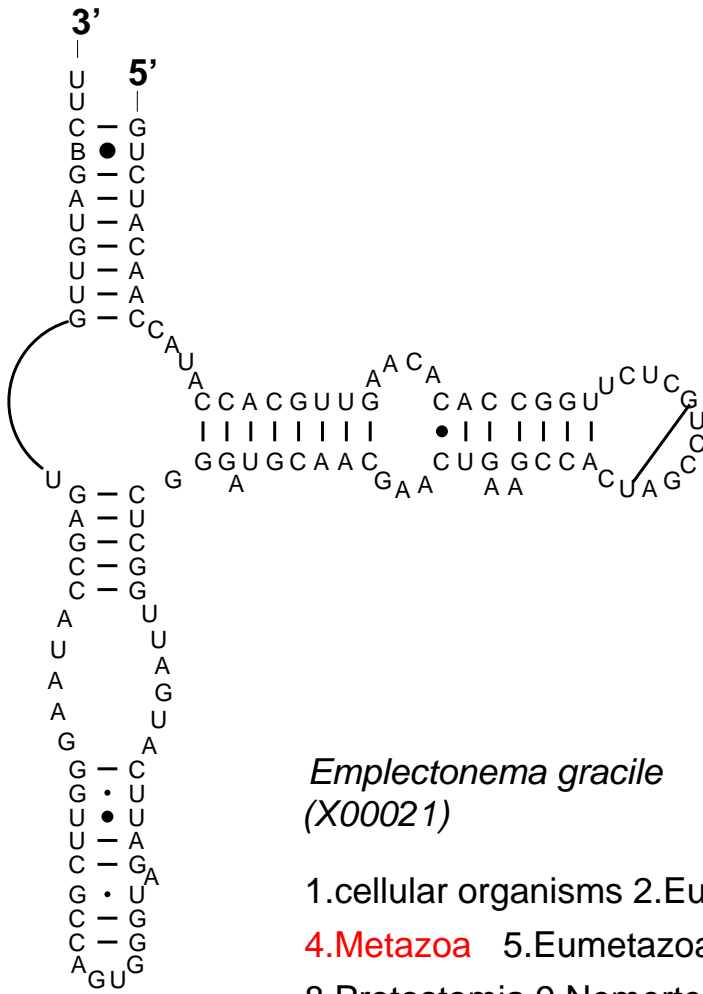


Secondary Structure: 5S Ribosomal RNA



Emplectonema gracile
(X00021)

- 1.cellular organisms 2.Eukaryota 3.Fungi/Metazoa group
 - 4.Metazoa** 5.Eumetazoa 6.Bilateria 7.Coelomata
 - 8.Protostomia 9.Nemertea 10.Enopla 11.Hoplonemertea
 - 12.Monostilifera 13.Emplectonematidae 14.Emplectonema
- December,2000