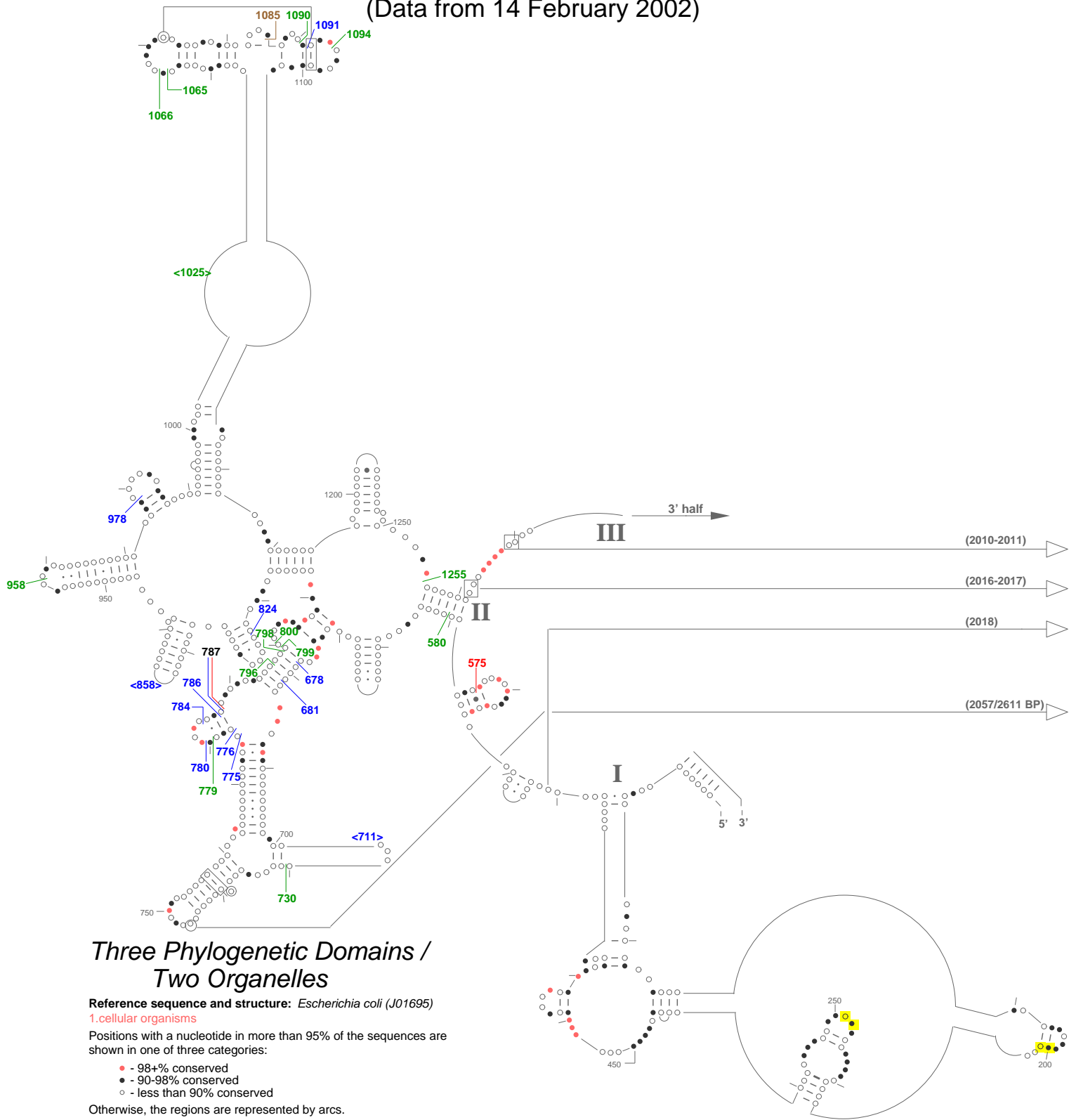


rRNA Introns: Intron Positions in 23S rRNA, 5' half  
 Shown on the Three Phylogenetic Domains/Two Organelles Conservation Diagram  
 (Data from 14 February 2002)



**Three Phylogenetic Domains /  
 Two Organelles**

Reference sequence and structure: *Escherichia coli* (J01695)

**1. cellular organisms**

Positions with a nucleotide in more than 95% of the sequences are shown in one of three categories:

- - 98+% conserved
- - 90-98% conserved
- - less than 90% conserved

Otherwise, the regions are represented by arcs.

Conservation Data Last Updated: July 2001

Intron Position Data Last Updated: February 2002

- - Insertion points of Group I introns
- - Insertion points of Group II introns
- - Insertion points of Archaeal non-Group I/II introns
- - Insertion points of Spliceosomal non-Group I/II introns
- - Insertion points of non-Group I, II, Archaeal, Spliceosomal introns

Yellow highlights show proximity (within 10.0 angstroms) to the A, P, and E sites (based upon PDB entry 1GIY):

Position numbers listed in <> are not conserved in the Three Phylogenetic Domains/  
 Two Organelles sequence alignment.