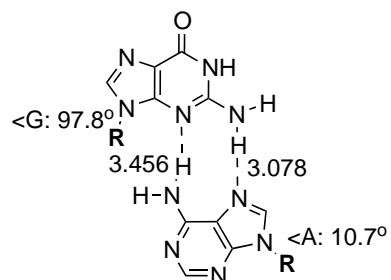
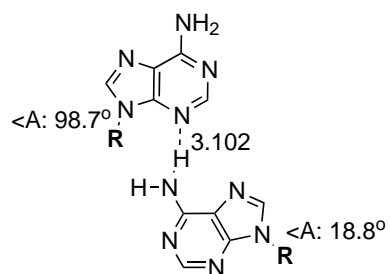


b)

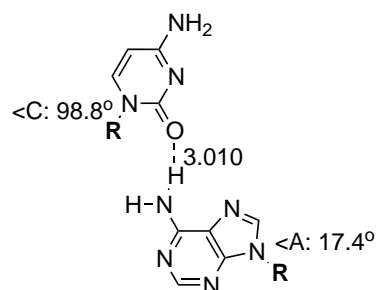
1) G:A S (N=142, dCC=9.449)



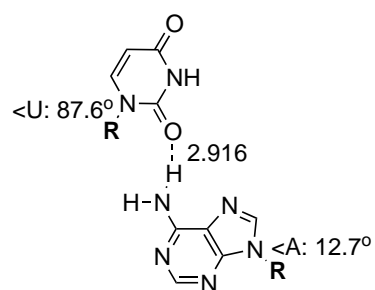
2) A:A S (N=10, dCC=9.770)



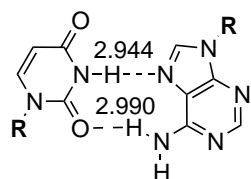
3) C:A S (N=8, dCC=9.821)



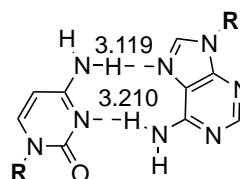
4) U:A S (N=7, dCC=10.006)



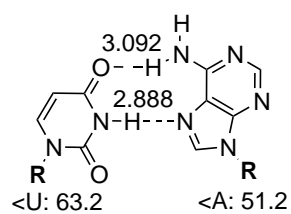
5) U:A rH (N=58, dCC=9.689)



6) C:A rH (N=13, dCC=10.881)



7) U:A H (N=8, dCC=8.231)



8) A:A rS (N=19, dCC=11.091)

