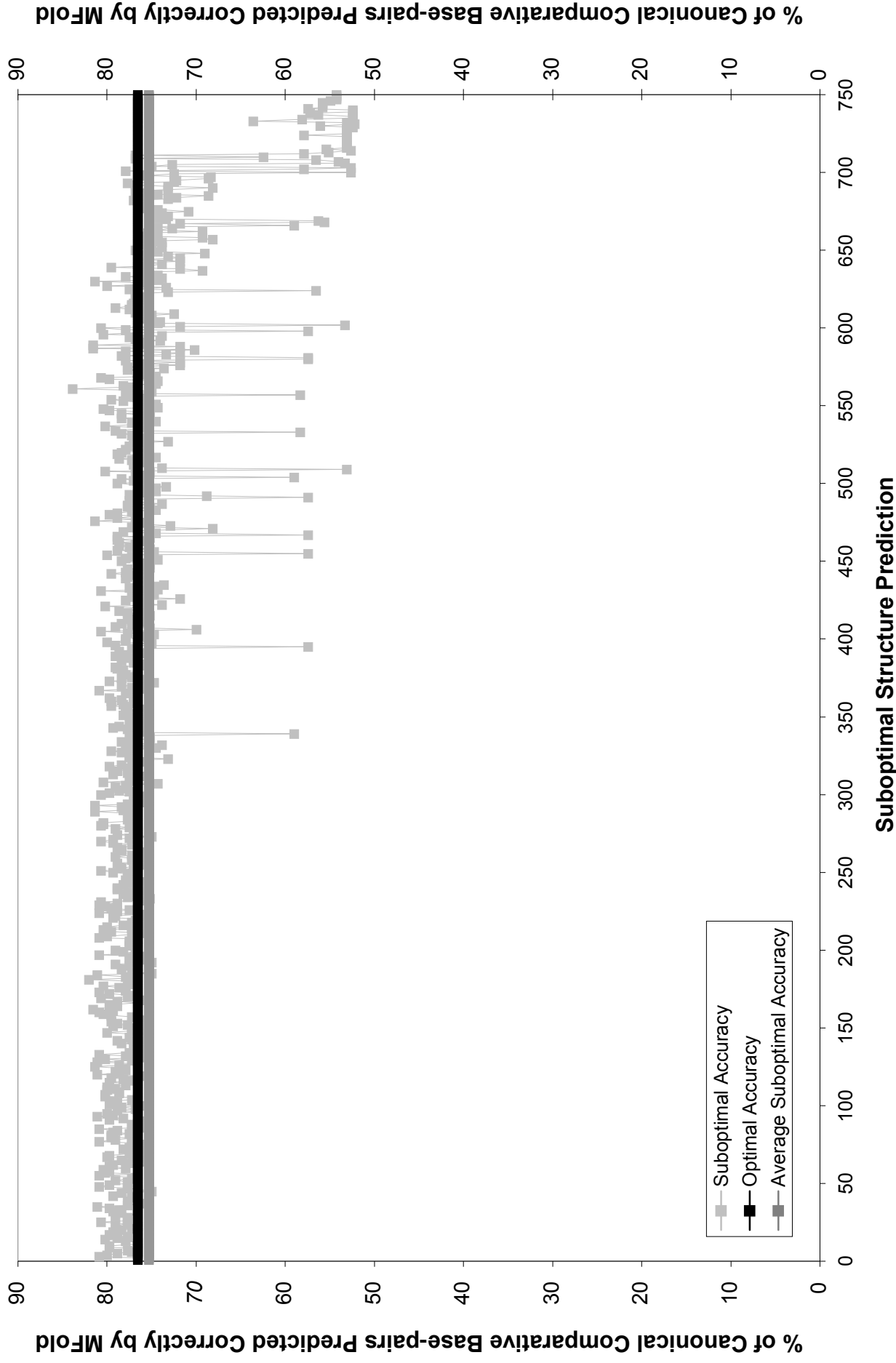


Accuracy of Individual Structure Predictions within the Suboptimal Population of the 16S rRNA *Haloferax Volcanii* with Mfold 3.1 and EFN2



The accuracy of each structure prediction within the population of 750 structure predictions for the 16S rRNA *Haloferax Volcanii* is observed. The solid black line represents the accuracy of the optimum or minimum free energy structure prediction. The dark gray line represents the average accuracy for a structure prediction within the suboptimal population. Suboptimal structure predictions are ordered by increasing free energy (suboptimal 50 has a lower free energy than suboptimal 51). Folding parameters with Mfold 3.1 were window size (W)=1, max suboptimals (MAX)=750, percent suboptimal (P)=5% and efn2 re-evaluation and re-ordering.