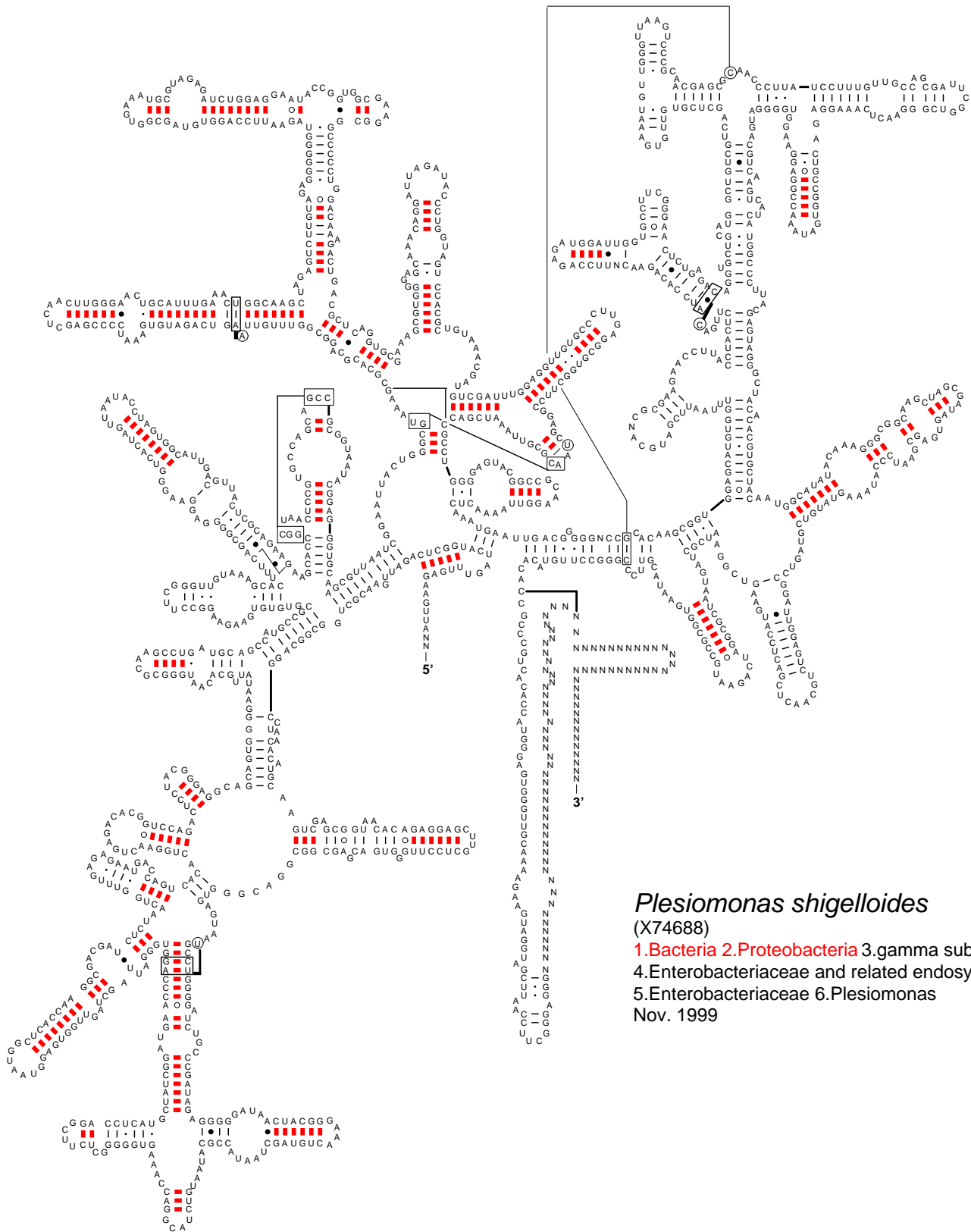


Secondary Structure: small subunit ribosomal RNA

Citation and related information available at <http://www.rna.icmb.utexas.edu>



Plesiomonas shigelloides

(X74688)

1. Bacteria
 2. Proteobacteria
 3. gamma subdivision
 4. Enterobacteriaceae and related endosymbionts
 5. Enterobacteriaceae
 6. *Plesiomonas*
- Nov. 1999