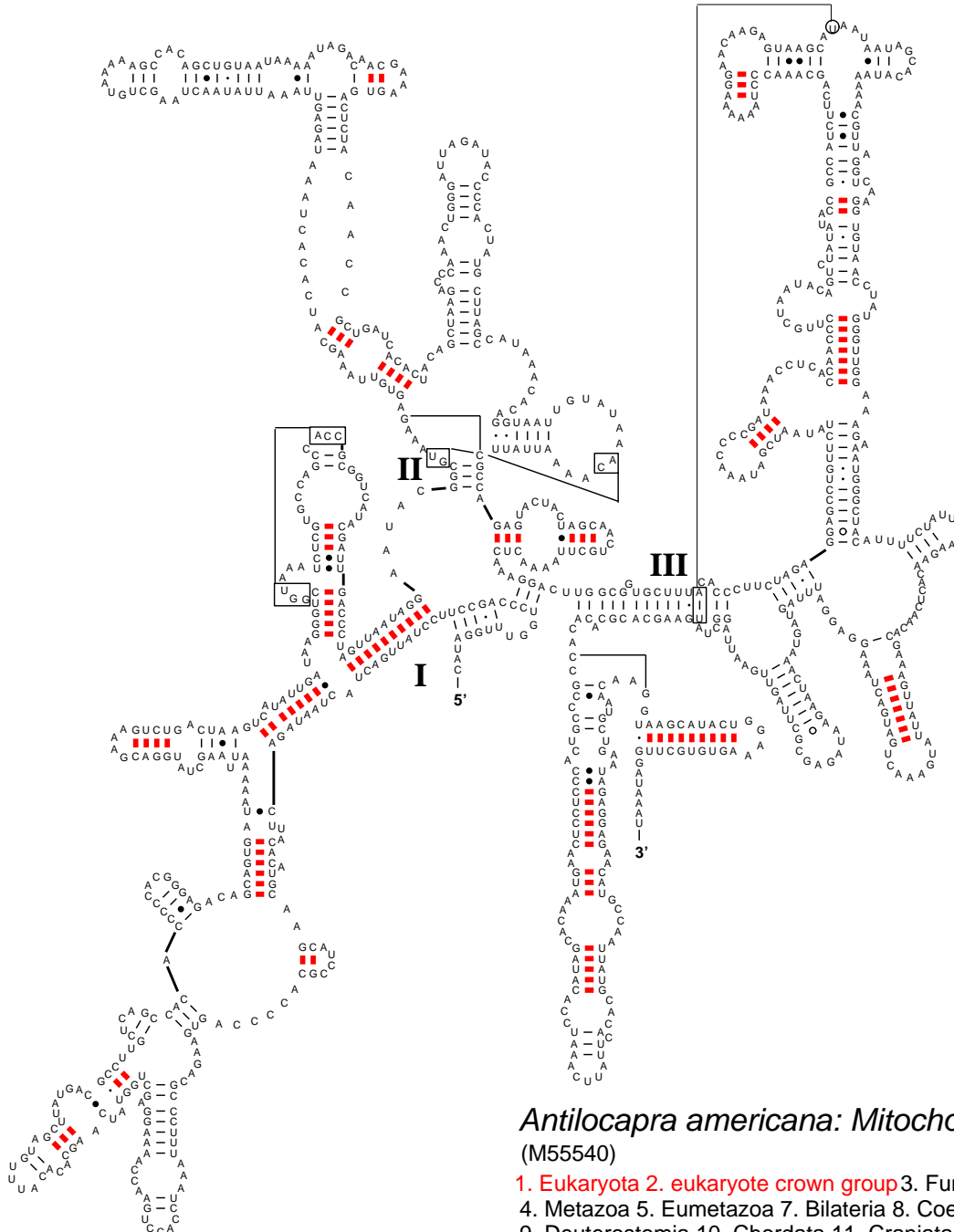


## Secondary Structure: small subunit ribosomal RNA



### *Antilocapra americana*: Mitochondrion

(M55540)

1. Eukaryota
  2. eukaryote crown group
  3. Fungi/Metazoa group
  4. Metazoa
  5. Eumetazoa
  7. Bilateria
  8. Coelomata
  9. Deuterostomia
  10. Chordata
  11. Craniata
  12. Vertebrata
  13. Gnathostomata
  14. bony vertebrates
  15. lobe-finned fish and tetrapod clade
  16. Tetrapoda
  17. Amniota
  18. Mammalia
  19. Theria
  20. Eutheria
  21. Cetartiodactyla
  22. Ruminantia
  23. Pecora
  24. Bovoidea
  25. Antilocapridae
- Nov 1999