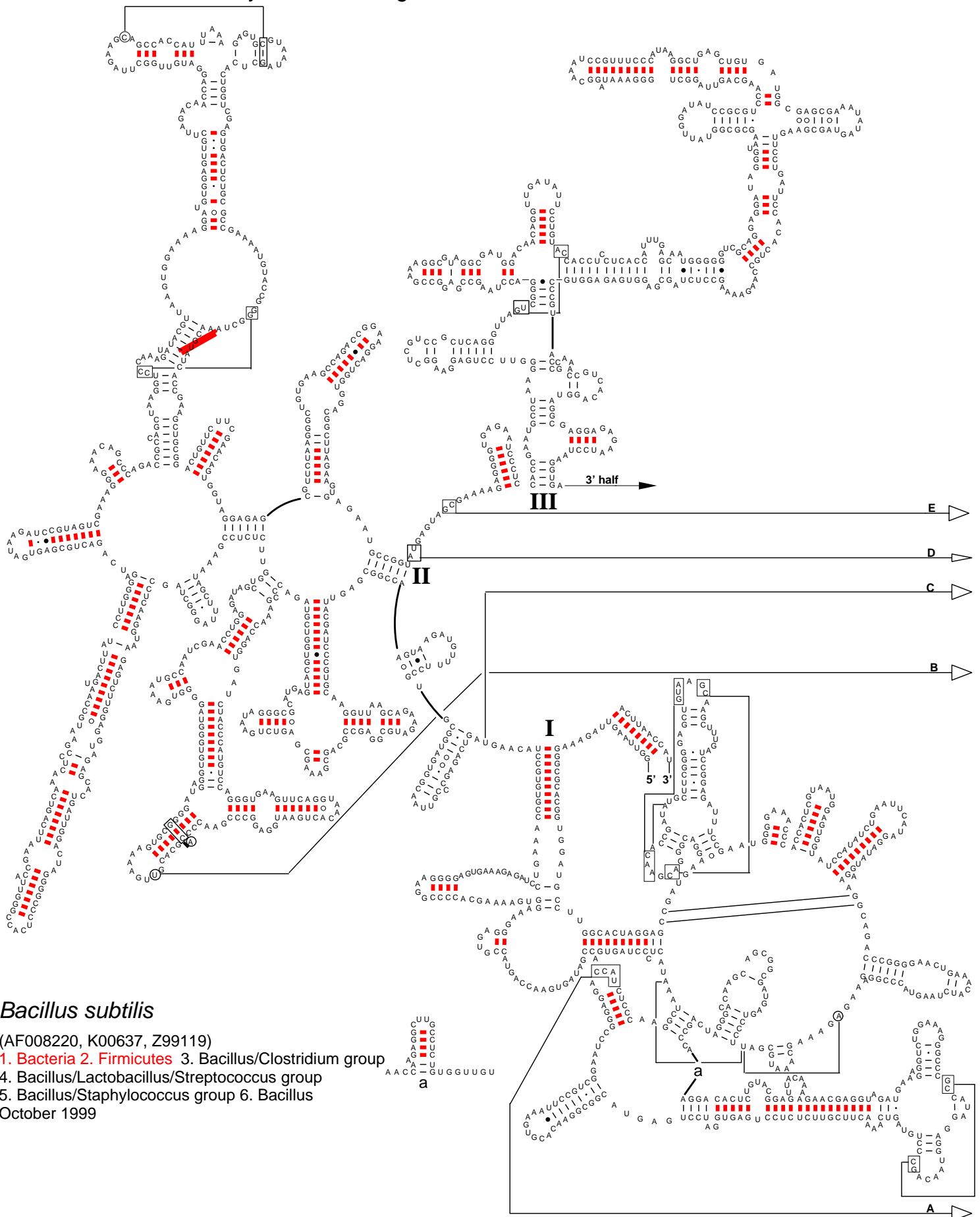


Secondary Structure: large subunit ribosomal RNA - 5' half



Bacillus subtilis

(AF008220, K00637, Z99119)

1. Bacteria 2. Firmicutes 3. Bacillus/Clostridium group
 4. Bacillus/Lactobacillus/Streptococcus group
 5. Bacillus/Staphylococcus group 6. Bacillus
- October 1999