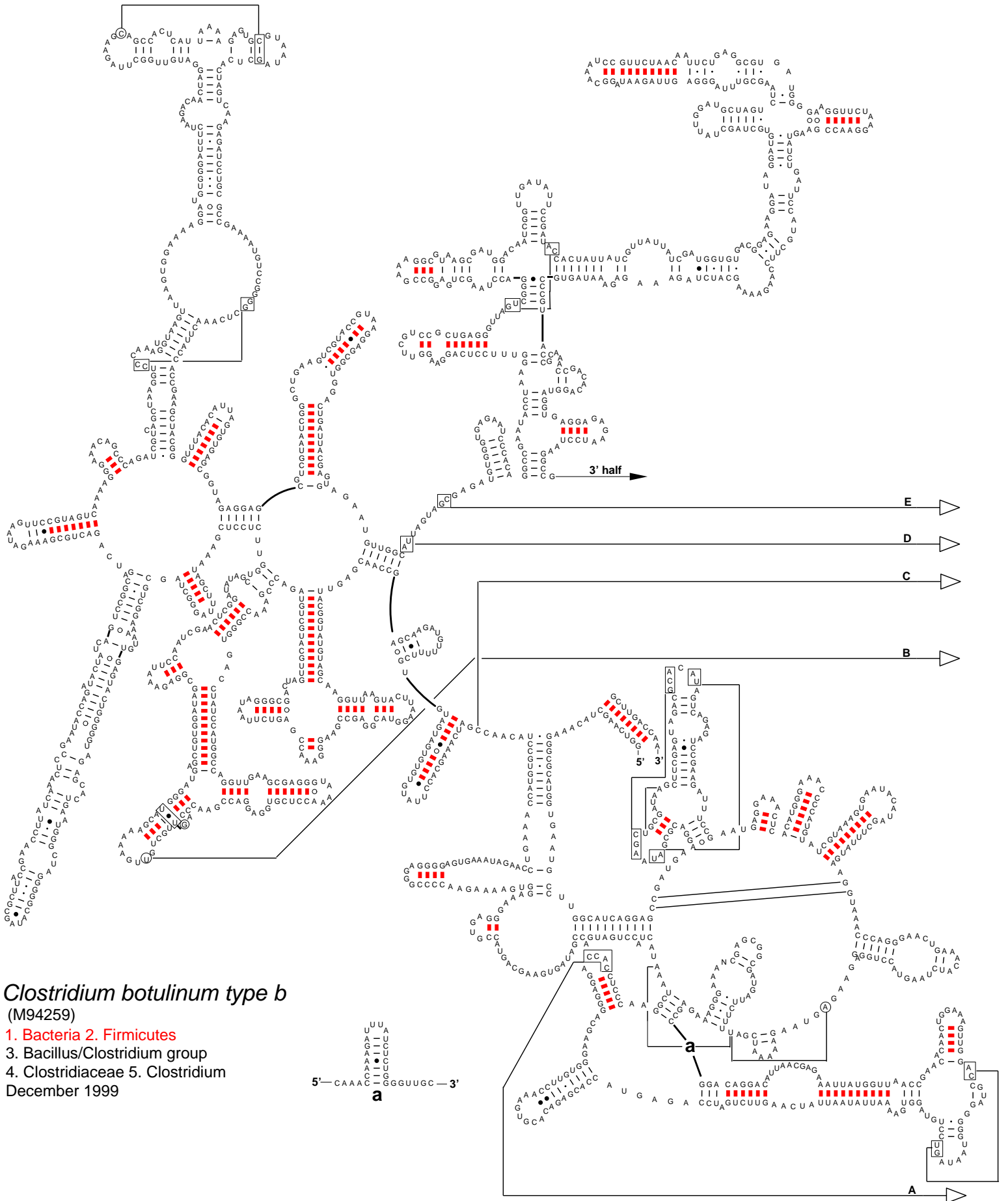


Secondary Structure: large subunit ribosomal RNA - 5' half



Clostridium botulinum type b
(M94259)

1. Bacteria 2. Firmicutes
 3. Bacillus/Clostridium group
 4. Clostridiaceae 5. Clostridium
- December 1999

5'-CAAAA-3'
5'-GGGUUGC-3'
a