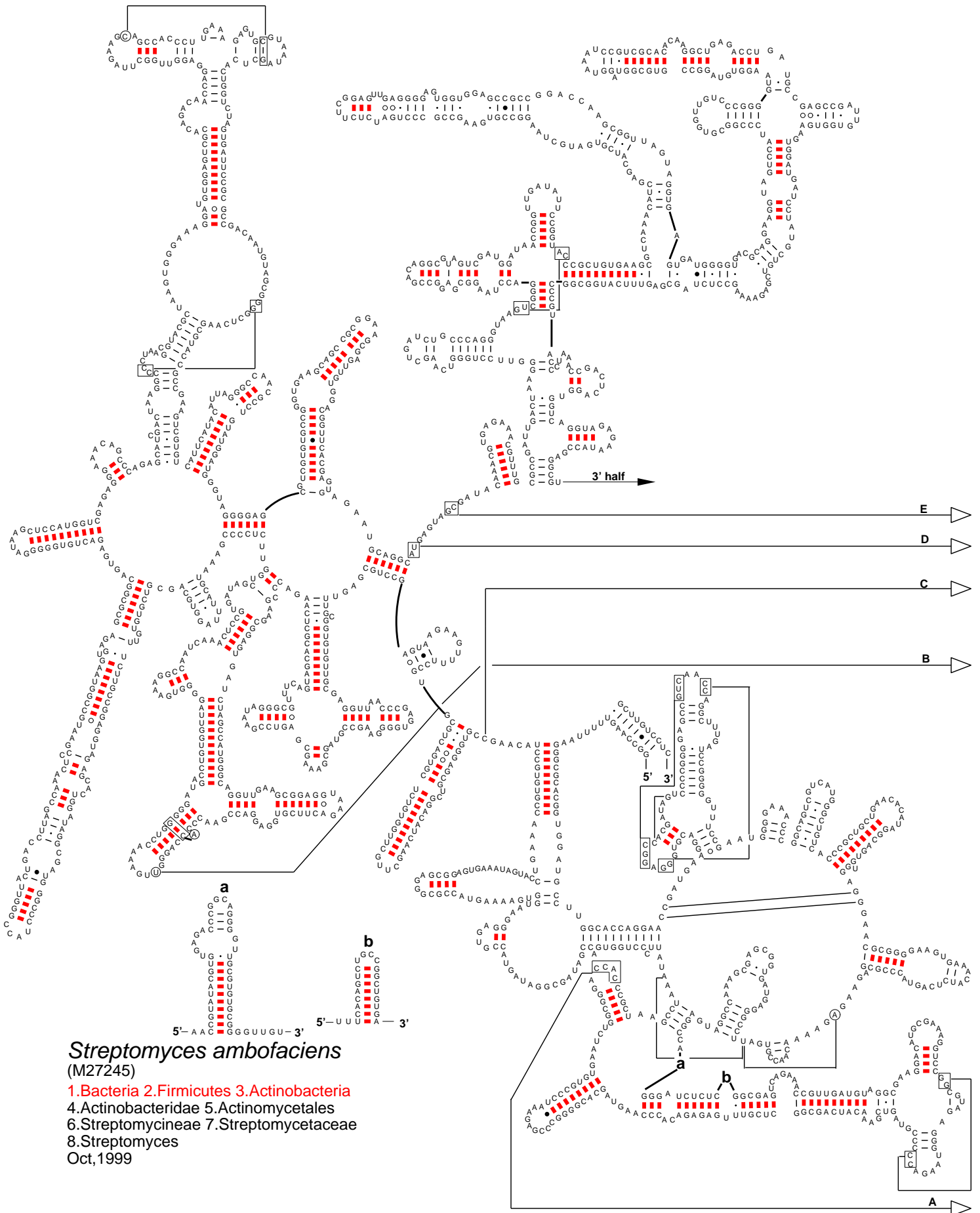


Secondary Structure: large subunit ribosomal RNA - 5' half



Streptomyces ambofaciens
(M27245)

1. Bacteria 2. Firmicutes 3. Actinobacteria
 4. Actinobacteridae 5. Actinomycetales
 6. Streptomycineae 7. Streptomycetaceae
 8. Streptomyces
- Oct, 1999