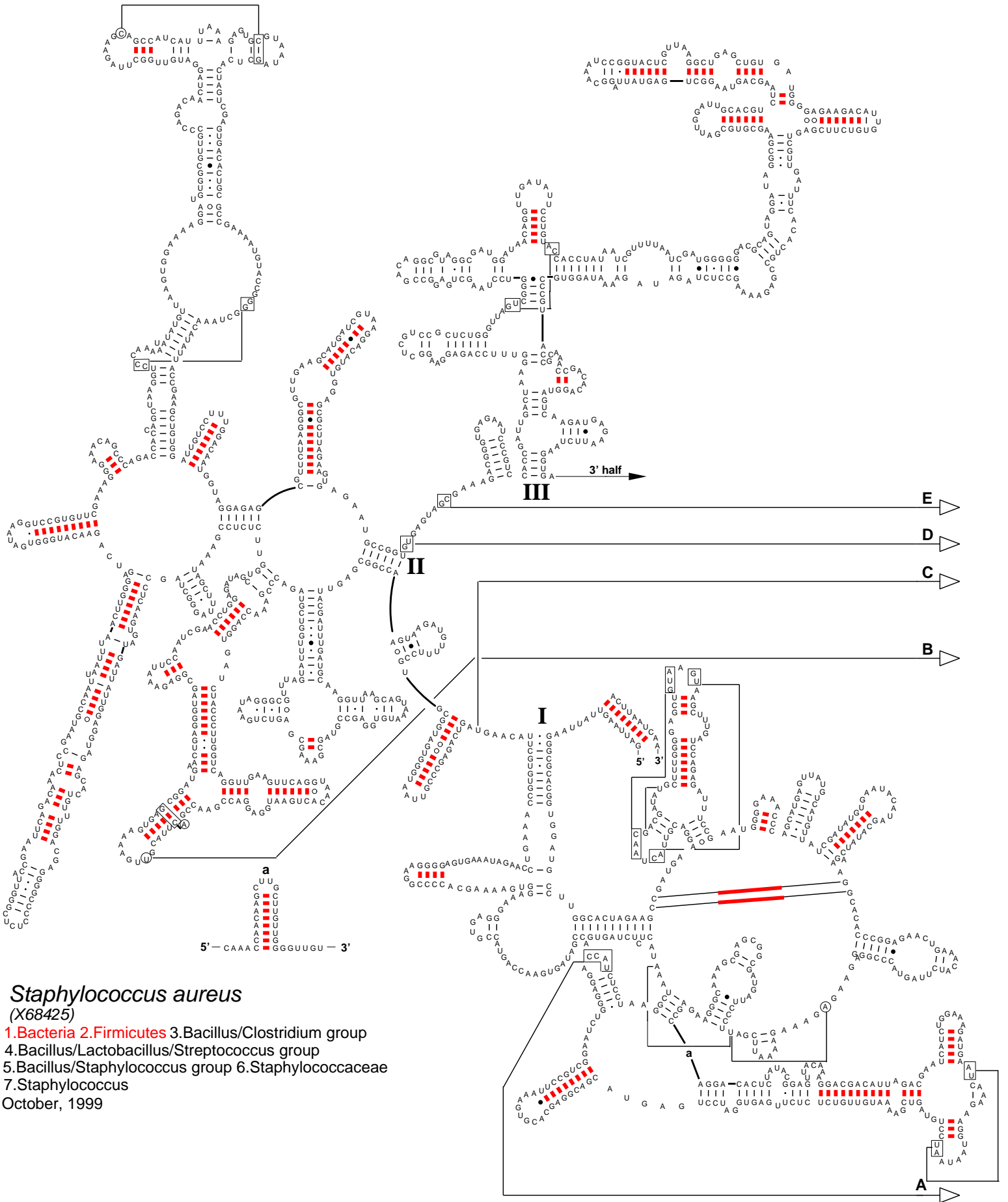


Secondary Structure: large subunit ribosomal RNA - 5' half



Staphylococcus aureus

(X68425)

1. Bacteria 2. Firmicutes 3. Bacillus/Clostridium group
4. Bacillus/Lactobacillus/Streptococcus group
5. Bacillus/Staphylococcus group 6. Staphylococcaceae
7. Staphylococcus

October, 1999