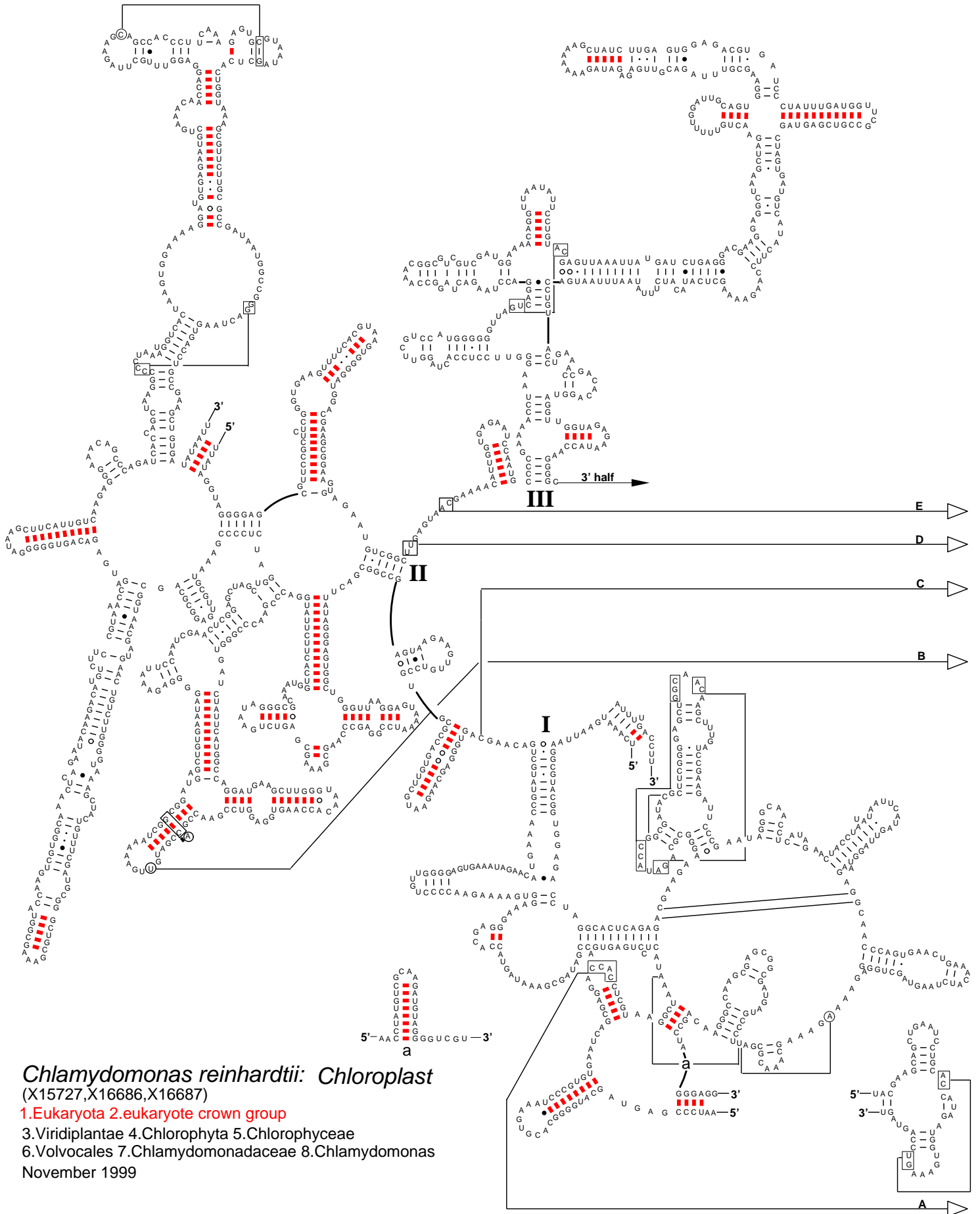


Secondary Structure: large subunit ribosomal RNA - 5' half



Chlamydomonas reinhardtii: Chloroplast
(X15727,X16686,X16687)

1. Eukaryota
 2. eukaryote crown group
 3. Viridiplantae
 4. Chlorophyta
 5. Chlorophyceae
 6. Volvocales
 7. Chlamydomonadaceae
 8. Chlamydomonas
- November 1999