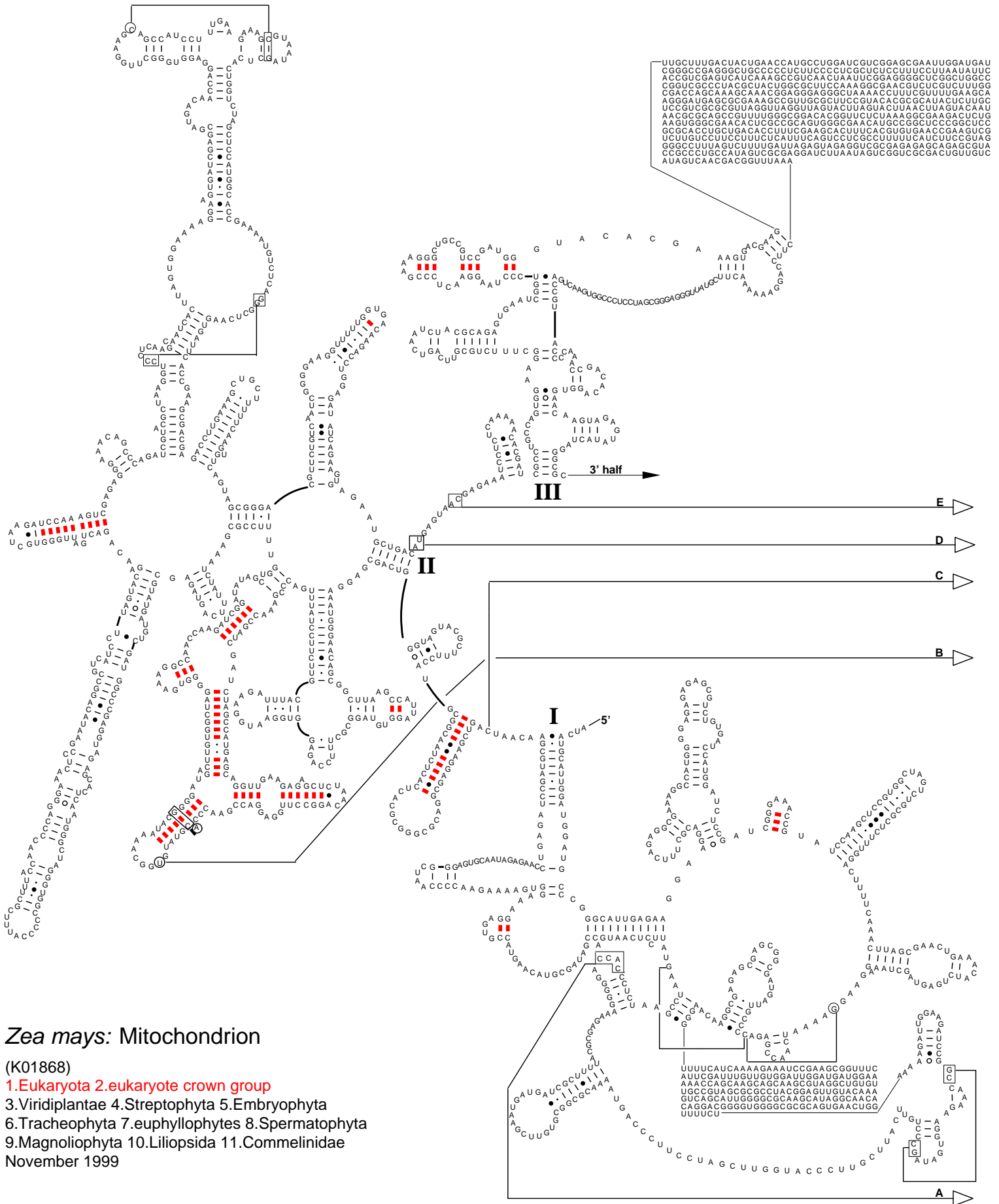


Secondary Structure: large subunit ribosomal RNA - 5' half



Zea mays: Mitochondrion

(K01868)

1. Eukaryota 2. eukaryote crown group
 3. Viridiplantae 4. Streptophyta 5. Embryophyta
 6. Tracheophyta 7. euphyllophytes 8. Spermatophyta
 9. Magnoliophyta 10. Liliopsida 11. Commelinidae
- November 1999