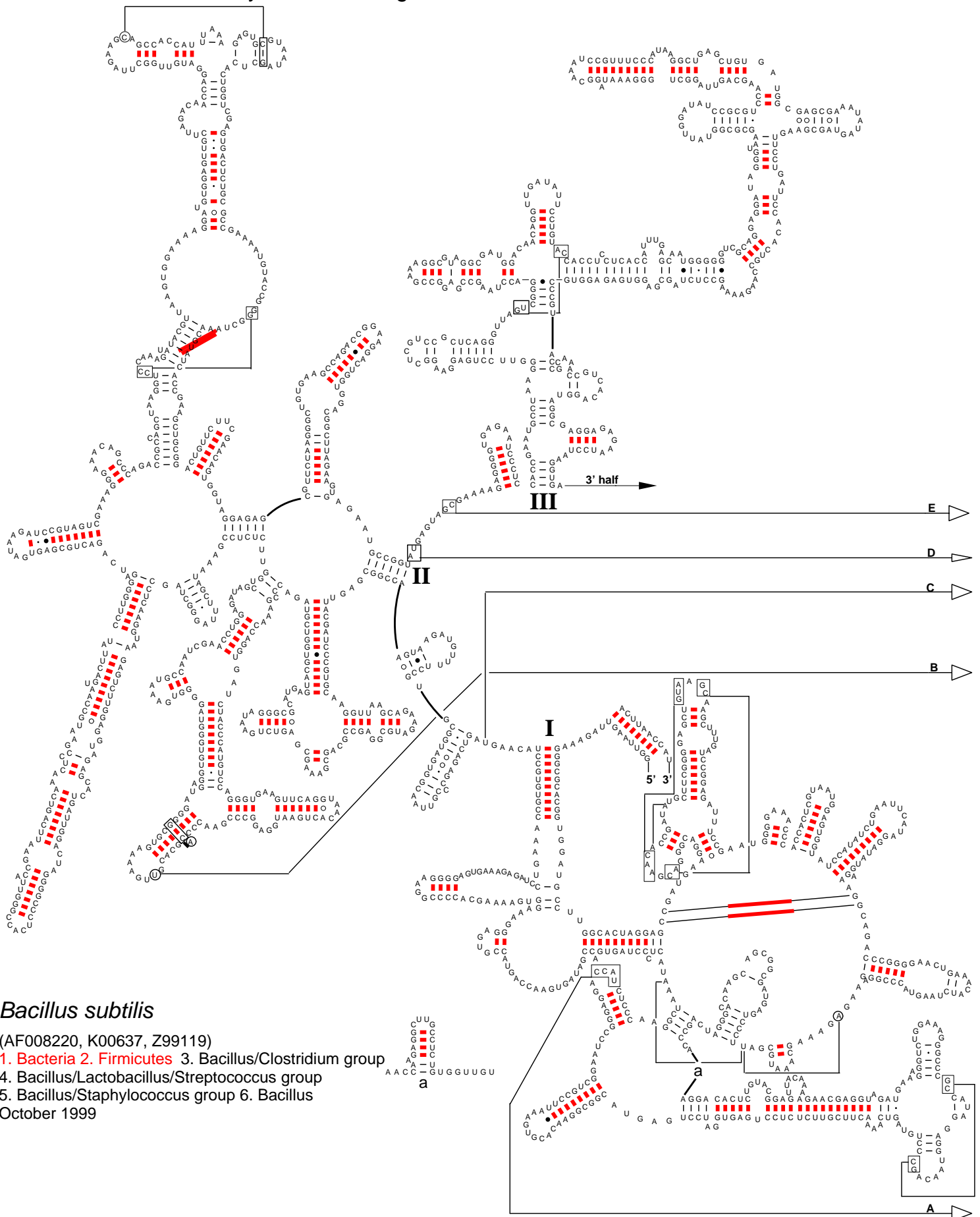


## Secondary Structure: large subunit ribosomal RNA - 5' half



### *Bacillus subtilis*

(AF008220, K00637, Z99119)

1. Bacteria 2. Firmicutes 3. Bacillus/Clostridium group
  4. Bacillus/Lactobacillus/Streptococcus group
  5. Bacillus/Staphylococcus group 6. Bacillus
- October 1999