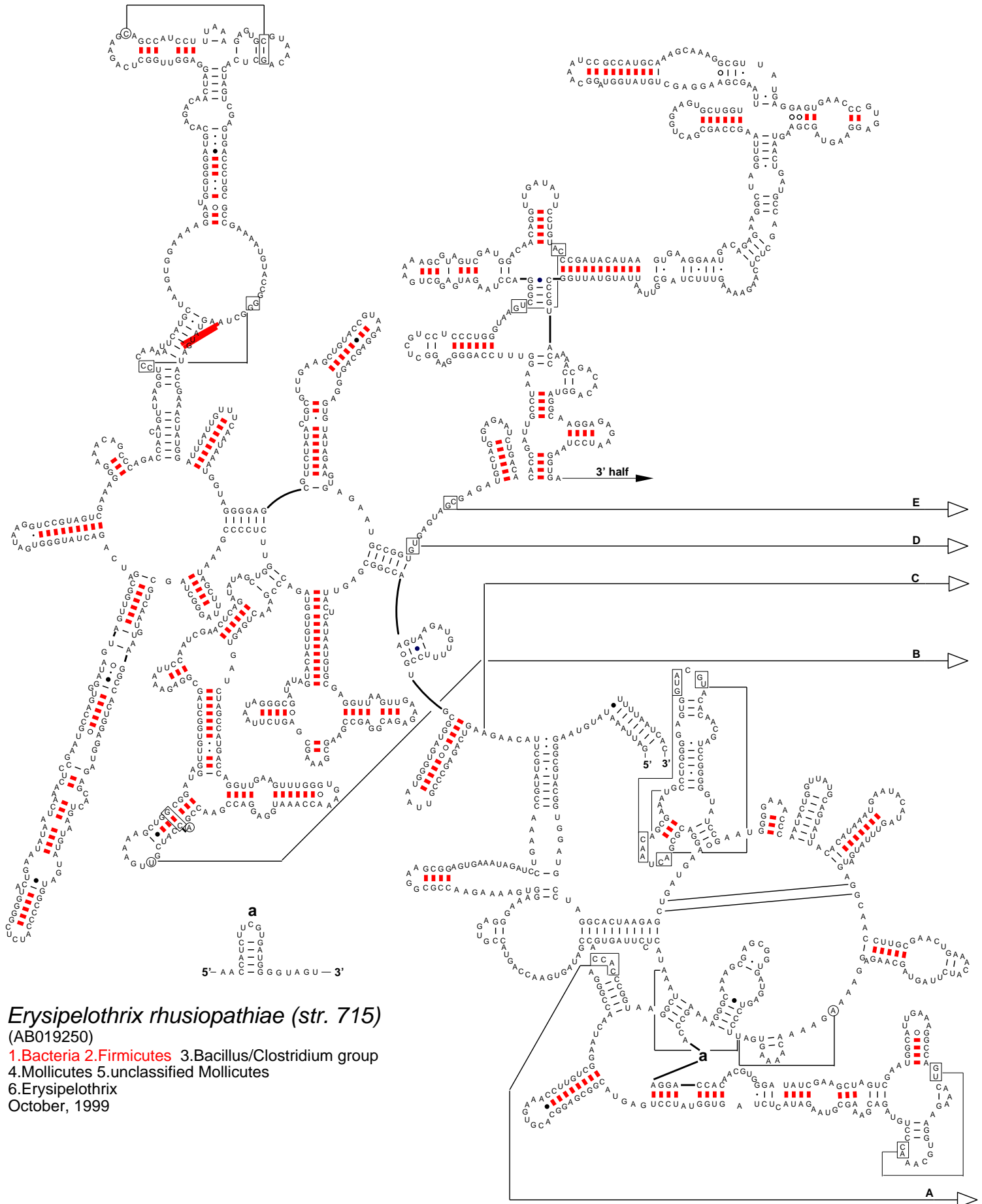


# Secondary Structure: large subunit ribosomal RNA - 5' half



## *Erysipelothrix rhusiopathiae* (str. 715)

(AB019250)

1. Bacteria 2. Firmicutes 3. Bacillus/Clostridium group

4. Mollicutes 5. unclassified Mollicutes

6. Erysipelothrix

October, 1999