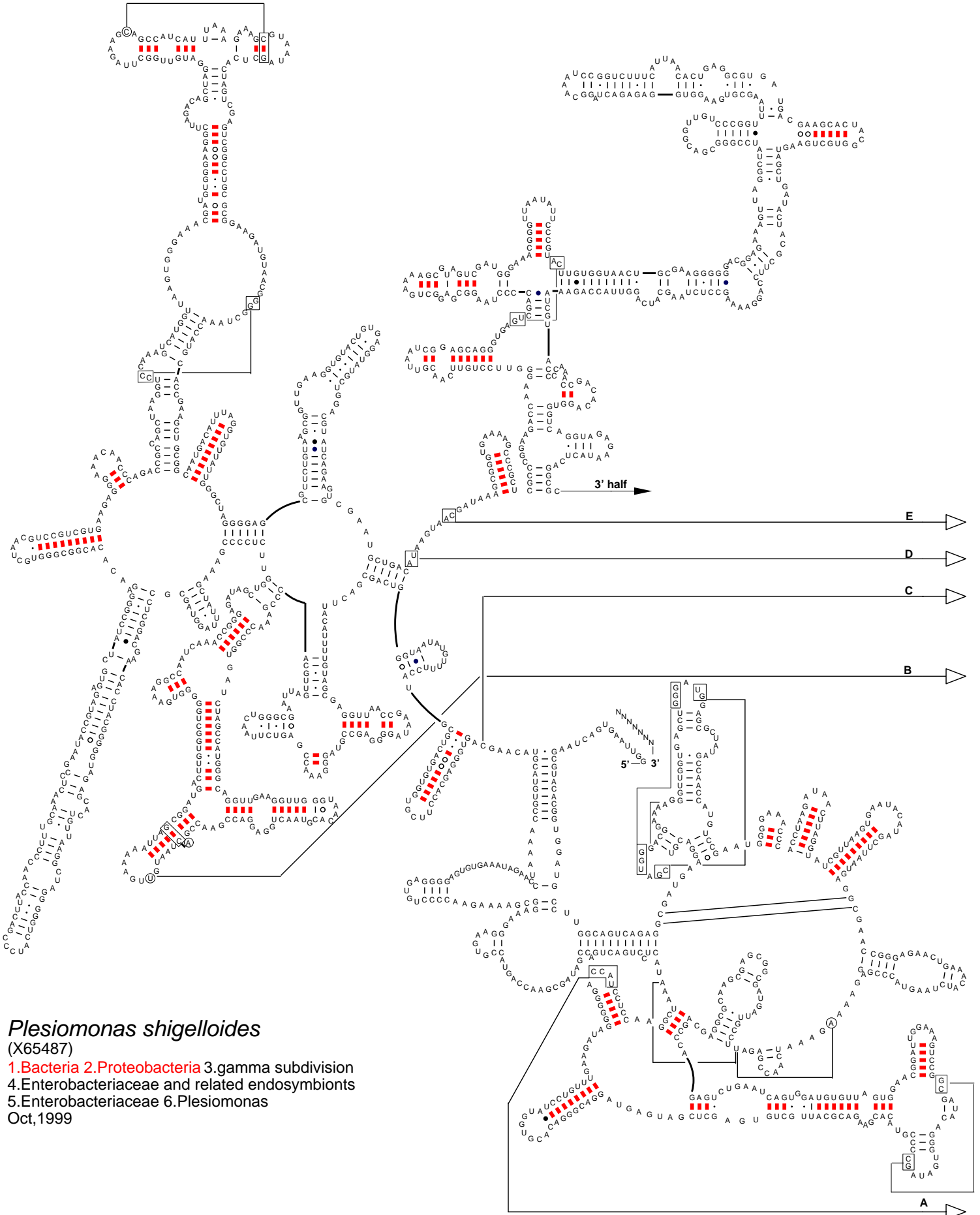


Secondary Structure: large subunit ribosomal RNA - 5' half



Plesiomonas shigelloides
(X65487)

1. Bacteria
 2. Proteobacteria
 3. gamma subdivision
 4. Enterobacteriaceae and related endosymbionts
 5. Enterobacteriaceae
 6. *Plesiomonas*
- Oct, 1999