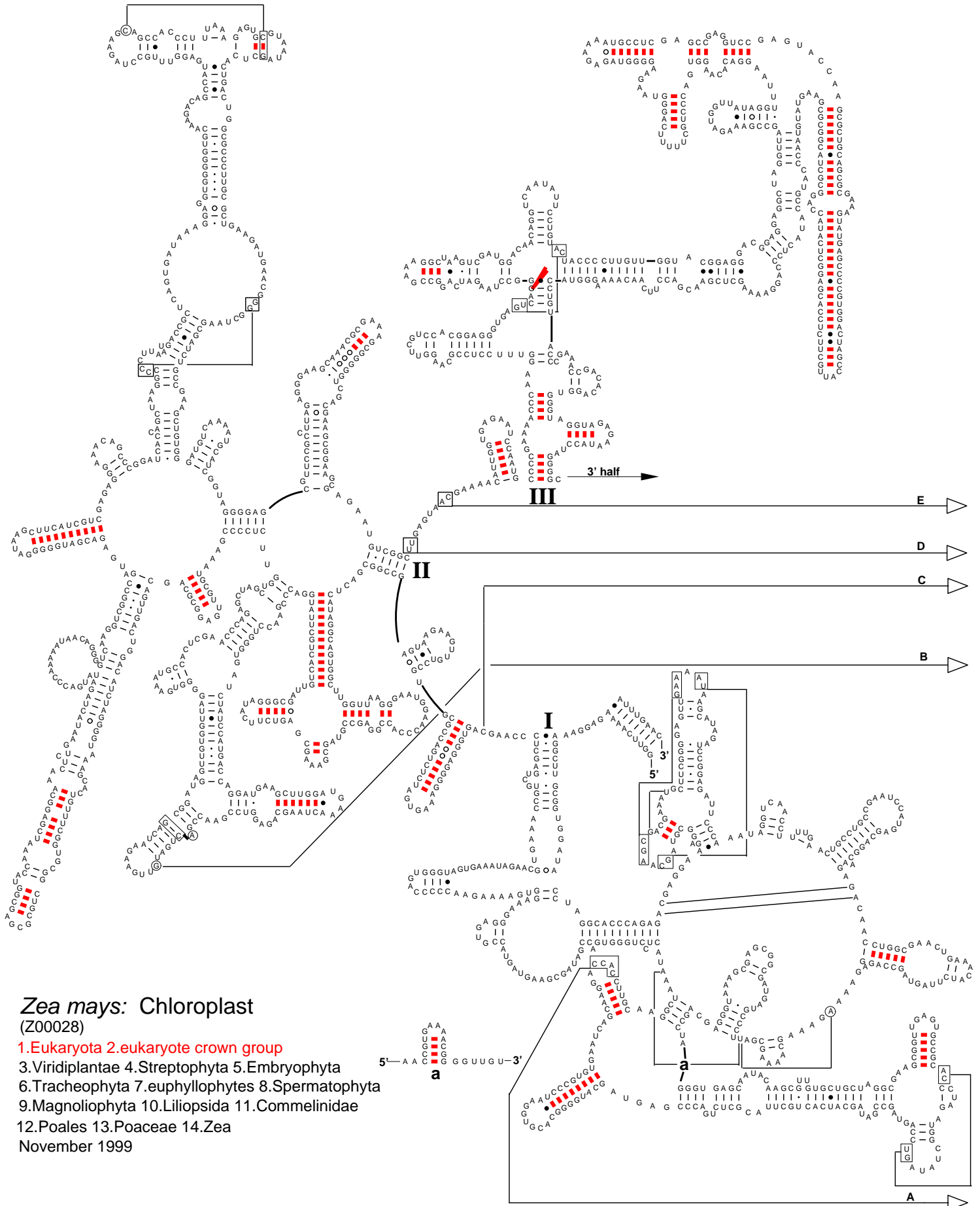


Secondary Structure: large subunit ribosomal RNA - 5' half



Zea mays: Chloroplast

(Z00028)

- 1. Eukaryota
 - 2. eukaryote crown group
 - 3. Viridiplantae
 - 4. Streptophyta
 - 5. Embryophyta
 - 6. Tracheophyta
 - 7. euphyllophytes
 - 8. Spermatophyta
 - 9. Magnoliophyta
 - 10. Liliopsida
 - 11. Commelinidae
 - 12. Poales
 - 13. Poaceae
 - 14. *Zea*
- November 1999