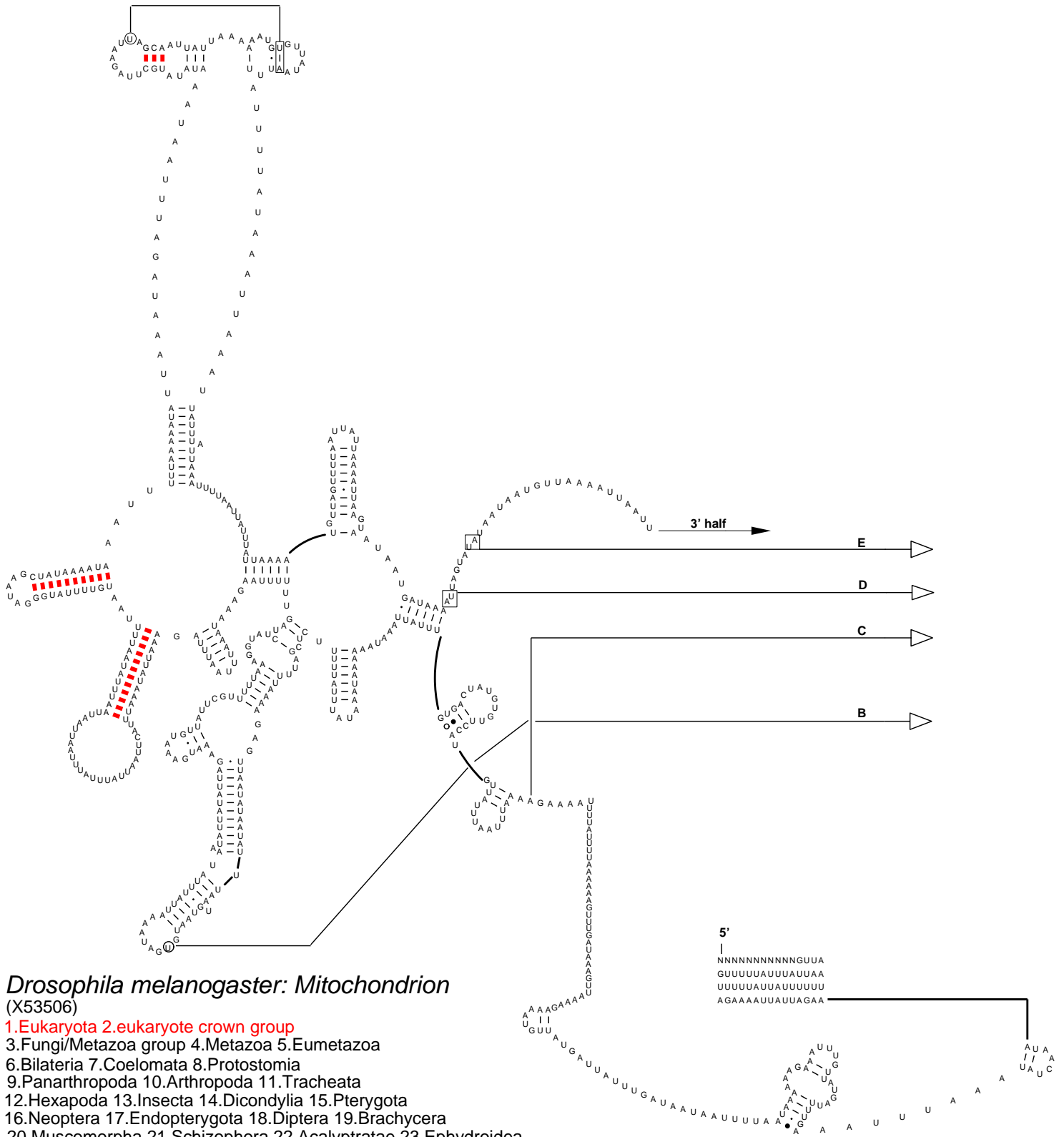


## Secondary Structure: large subunit ribosomal RNA - 5' half



### *Drosophila melanogaster*: Mitochondrion (X53506)

1. Eukaryota
  2. eukaryote crown group
  3. Fungi/Metazoa group
  4. Metazoa
  5. Eumetazoa
  6. Bilateria
  7. Coelomata
  8. Protostomia
  9. Panarthropoda
  10. Arthropoda
  11. Tracheata
  12. Hexapoda
  13. Insecta
  14. Dicondylia
  15. Pterygota
  16. Neoptera
  17. Endopterygota
  18. Diptera
  19. Brachycera
  20. Muscomorpha
  21. Schizophora
  22. Acalyptratae
  23. Ephydroidea
  24. Drosophilidae
  25. Drosophilinae
  26. Drosophilini
  27. Drosophilina
  28. Drosophila
  29. Sophophora
  30. melanogaster group
  31. melanogaster subgroup
- February 2000