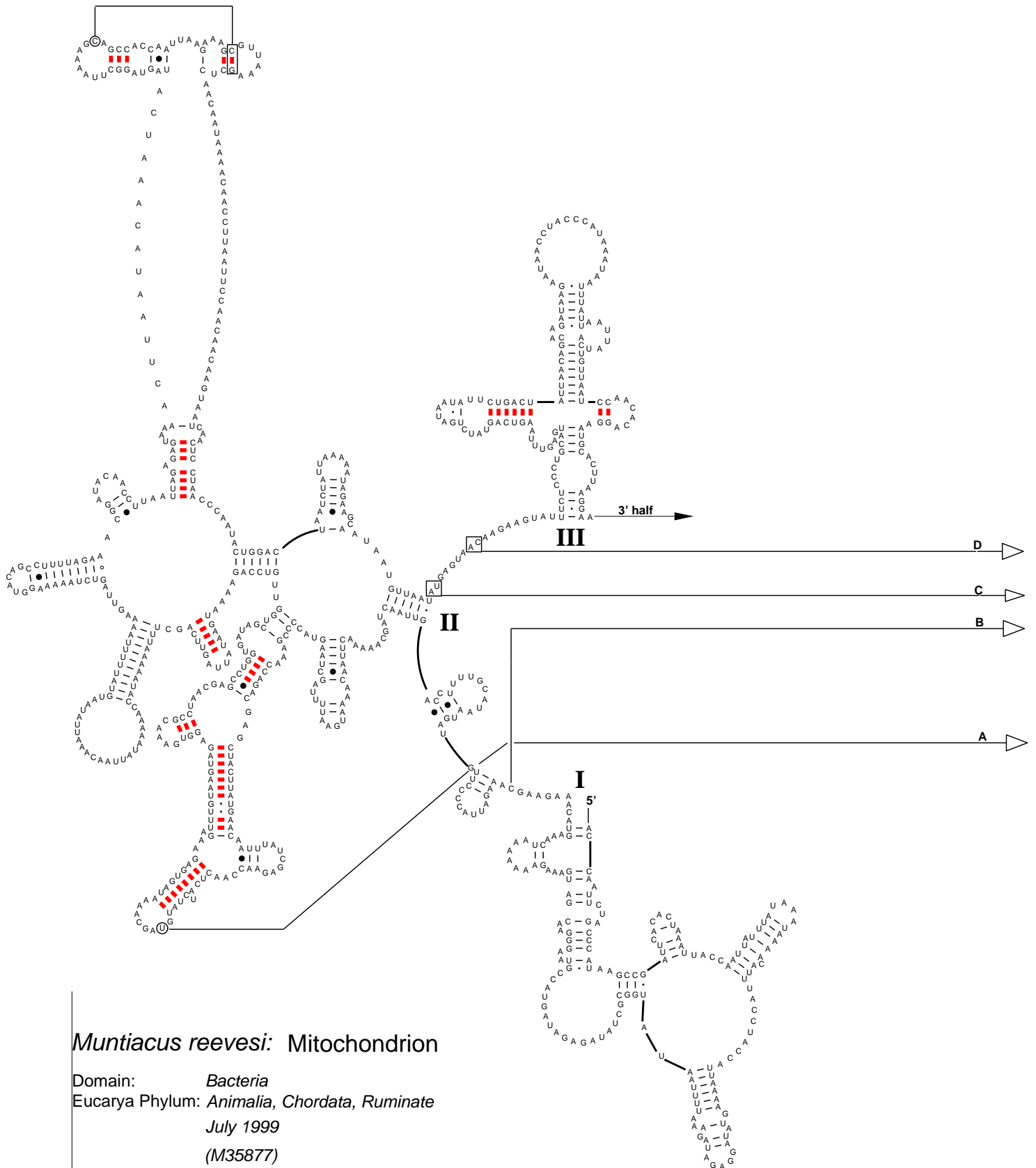


Secondary Structure of mitochondrial 23S Ribosomal RNA: 5'half



Muntiacus reevesi: Mitochondrion

Domain: *Bacteria*
 Eucarya Phylum: *Animalia, Chordata, Ruminata*
 July 1999
 (M35877)

Citation and related information at <http://www.rna.icmb.utexas.edu>